

# JATI - KEBON

[www.Bcosy.be](http://www.Bcosy.be)

*Luxury outdoor living, for everyone*

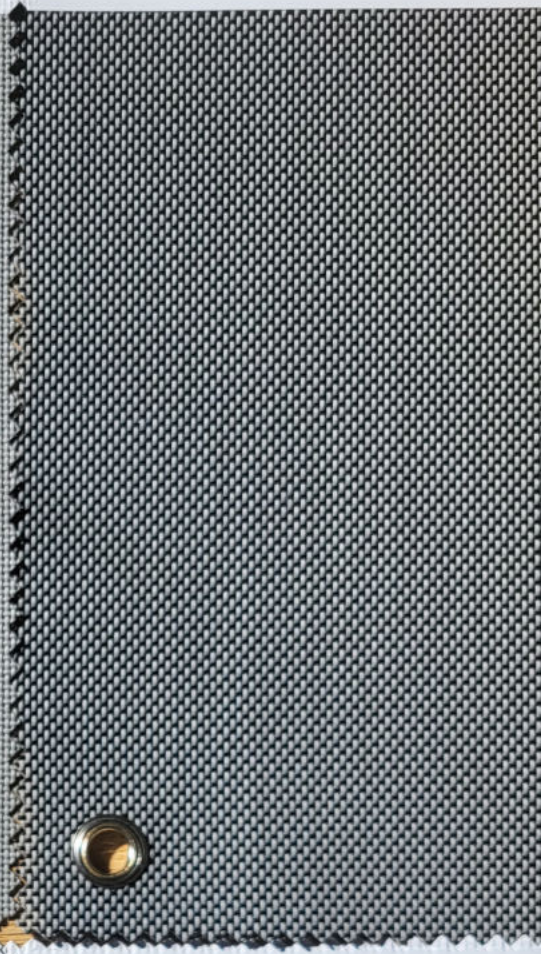
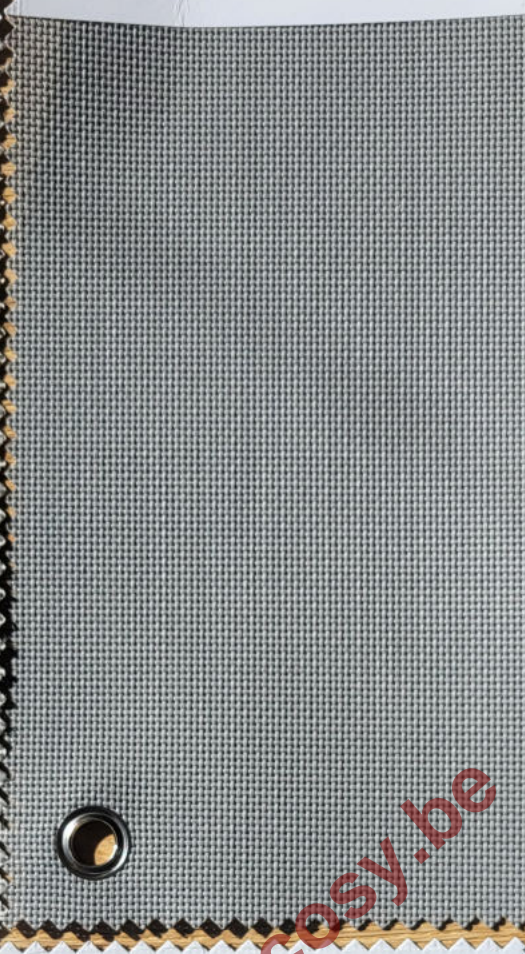
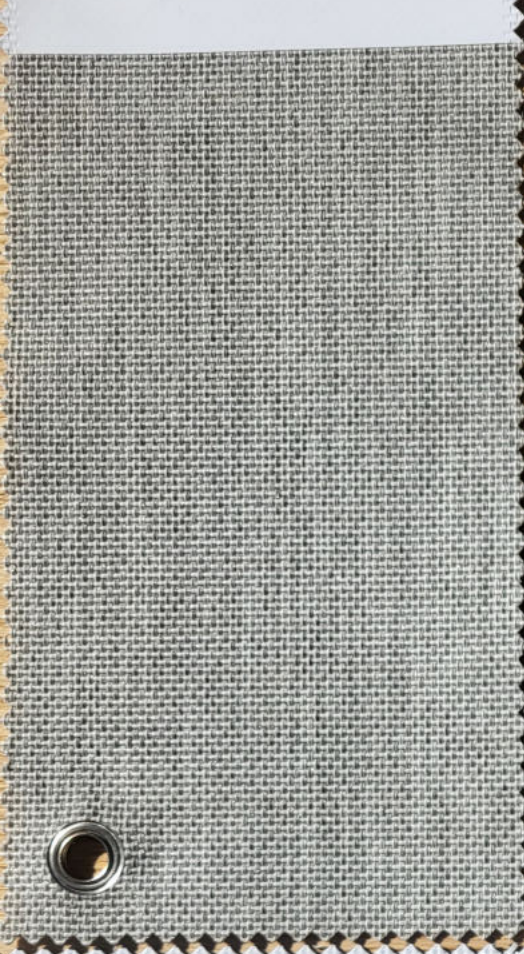
**JATI - KEBON**  
Texteline Stone

Composition: 100% Polyester

**JATI - KEBON**  
Texteline Light Grey

Composition: 100% Polyester

Texteline Silver Grey



**JATI - KEBON**  
Serge Ferrari Batylne Dark Grey

Weight/m<sup>2</sup>: 450g/m<sup>2</sup>  
Colour fastness UV: 4  
Pilling (Martindale) : 4

**JATI - KEBON**  
Serge Ferrari Batylne Taupe

Weight/m<sup>2</sup>: 450g/m<sup>2</sup>  
Colour fastness UV: 4  
Pilling (Martindale) : 4

**JATI - KEBON**  
Serge Ferrari Batylne Sand

Weight/m<sup>2</sup>: 450g/m<sup>2</sup>  
Colour fastness UV: 4  
Pilling (Martindale) : 4



**www.bcoosy.be**

**JATI · KEBON**  
Suntessa Marshall Mineral Blue

Composition: 100% Polyolefine  
Weight/m<sup>2</sup>: 344g/m<sup>2</sup>  
Colour fastness UV: 7  
Pilling (Martindale) : 4  
NON PFAS

**JATI · KEBON**  
Suntessa Marshall Beige-White

Composition: 100% Polyolefine  
Weight/m<sup>2</sup>: 344g/m<sup>2</sup>  
Colour fastness UV: 7  
Pilling (Martindale) : 4  
NON PFAS

**JATI · KEBON**  
Suntessa Marshall Oliv Green

Composition: 100% Polyolefine  
Weight/m<sup>2</sup>: 344g/m<sup>2</sup>  
Colour fastness UV: 7  
Pilling (Martindale) : 4  
NON PFAS

**JATI · KEBON**  
Suntessa Marshall Beige-Black

Composition: 100% Polyolefine  
Weight/m<sup>2</sup>: 344g/m<sup>2</sup>  
Colour fastness UV: 7  
Pilling (Martindale) : 4  
NON PFAS

**JATI · KEBON**  
Suntessa Marshall Mustard Yellow

Composition: 100% Polyolefine  
Weight/m<sup>2</sup>: 344g/m<sup>2</sup>  
Colour fastness UV: 7  
Pilling (Martindale) : 4  
NON PFAS

**JATI · KEBON**  
Suntessa Marshall Bric Rust

Composition: 100% Polyolefine  
Weight/m<sup>2</sup>: 344g/m<sup>2</sup>  
Colour fastness UV: 7  
Pilling (Martindale) : 4  
NON PFAS

WWW.BCOSY.BE

**JATI · KEBON**

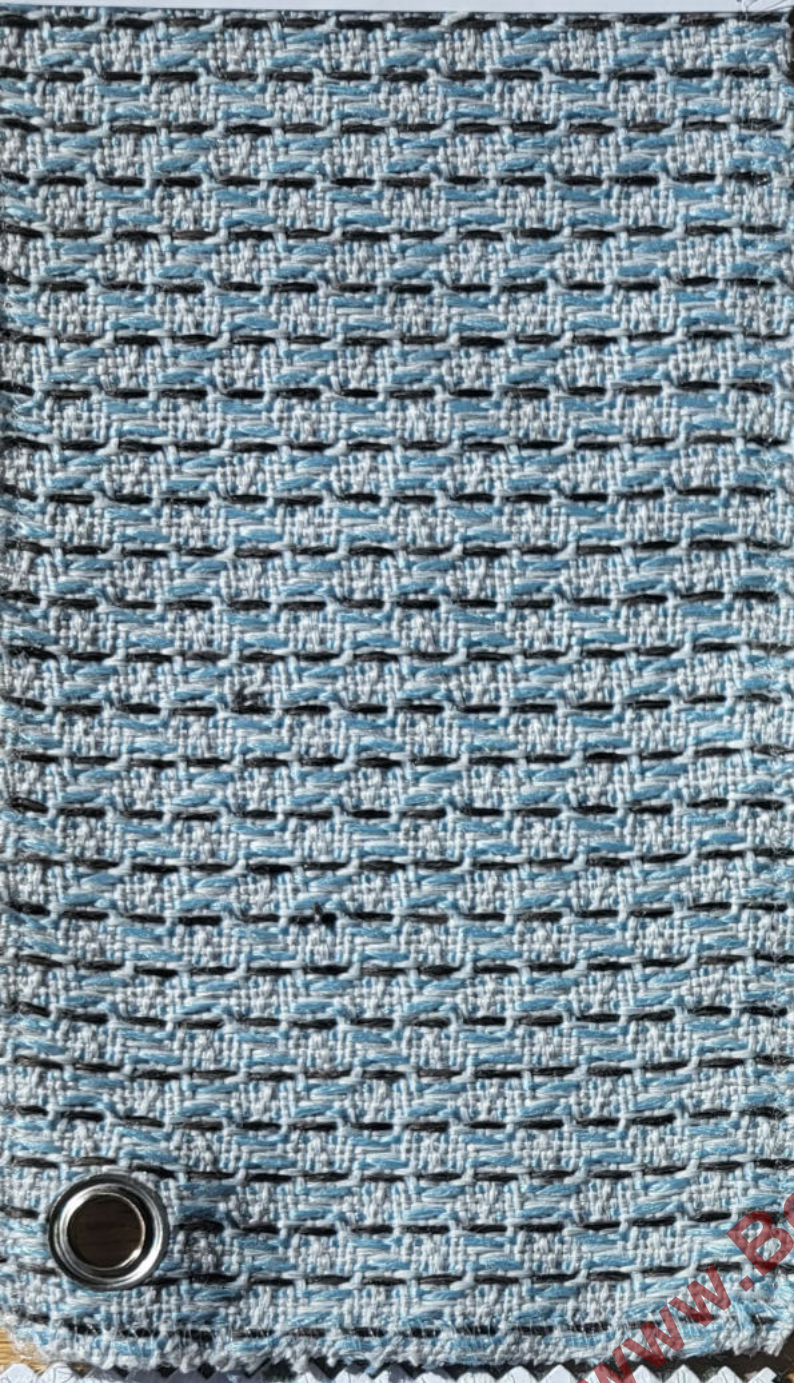
Suntessa Oceanica Mineral Blue

Composition: 100% Acrylic  
Weight/m<sup>2</sup>: 580g/m<sup>2</sup>  
Colour fastness UV: 7  
Pilling (Martindale) : 3-4  
NON PFAS

**JATI · KEBON**

Suntessa Oceanica Mustard Yellow

Composition: 100% Acrylic  
Weight/m<sup>2</sup>: 580g/m<sup>2</sup>  
Colour fastness UV: 7  
Pilling (Martindale) : 3-4  
NON PFAS



**JATI · KEBON**

Suntessa Oceanica Oliv Green

Composition: 100% Acrylic  
Weight/m<sup>2</sup>: 580g/m<sup>2</sup>  
Colour fastness UV: 7  
Pilling (Martindale) : 3-4  
NON PFAS

**JATI · KEBON**

Suntessa Oceanica Bric Rust

Composition: 100% Acrylic  
Weight/m<sup>2</sup>: 580g/m<sup>2</sup>  
Colour fastness UV: 7  
Pilling (Martindale) : 3-4  
NON PFAS





**JATI · KEBON**  
Suntessa Qassabi Bric Rust  
Composition: 100% Acrylic  
Weight/m<sup>2</sup>: 493g/m<sup>2</sup>  
Colour fastness UV: 7  
Pilling (Martindale) : 4  
NON PFAS

**JATI · KEBON**  
Suntessa Qassabi Mineral Blue  
Composition: 100% Acrylic  
Weight/m<sup>2</sup>: 493g/m<sup>2</sup>  
Colour fastness UV: 7  
Pilling (Martindale) : 4  
NON PFAS



**JATI · KEBON**  
Suntessa Qassabi Mustard Yellow  
Composition: 100% Acrylic  
Weight/m<sup>2</sup>: 493g/m<sup>2</sup>  
Colour fastness UV: 7  
Pilling (Martindale) : 4  
NON PFAS

**JATI · KEBON**  
Suntessa Qassabi Oliv Green  
Composition: 100% Acrylic  
Weight/m<sup>2</sup>: 493g/m<sup>2</sup>  
Colour fastness UV: 7  
Pilling (Martindale) : 4  
NON PFAS



**JATI - KEBON**  
Sunproof Jalousie 162

Composition : 100% Oerlin  
Weight/m<sup>2</sup> : 396 g/m<sup>2</sup>  
Colour Fastness UV : 7 to 8  
Rub Test : 22000 rubs  
PFAS

**JATI - KEBON**  
Sunproof Jalousie 180

Composition : 100% Oerlin  
Weight/m<sup>2</sup> : 396 g/m<sup>2</sup>  
Colour Fastness UV : 7 to 8  
Rub Test : 22000 rubs  
PFAS

**JATI - KEBON**  
Sunproof Fontelina 180

Composition : 100% Oerlin  
Weight/m<sup>2</sup> : 366 g/m<sup>2</sup>  
Colour Fastness UV : 7 to 8  
Rub Test : 16000 rubs  
NON PFAS

**JATI - KEBON**  
Sunproof Fontelina 165

Composition : 100% Oerlin  
Weight/m<sup>2</sup> : 366 g/m<sup>2</sup>  
Colour Fastness UV : 7 to 8  
Rub Test : 16000 rubs  
NON PFAS

**JATI - KEBON**  
Sunproof Fontelina 090

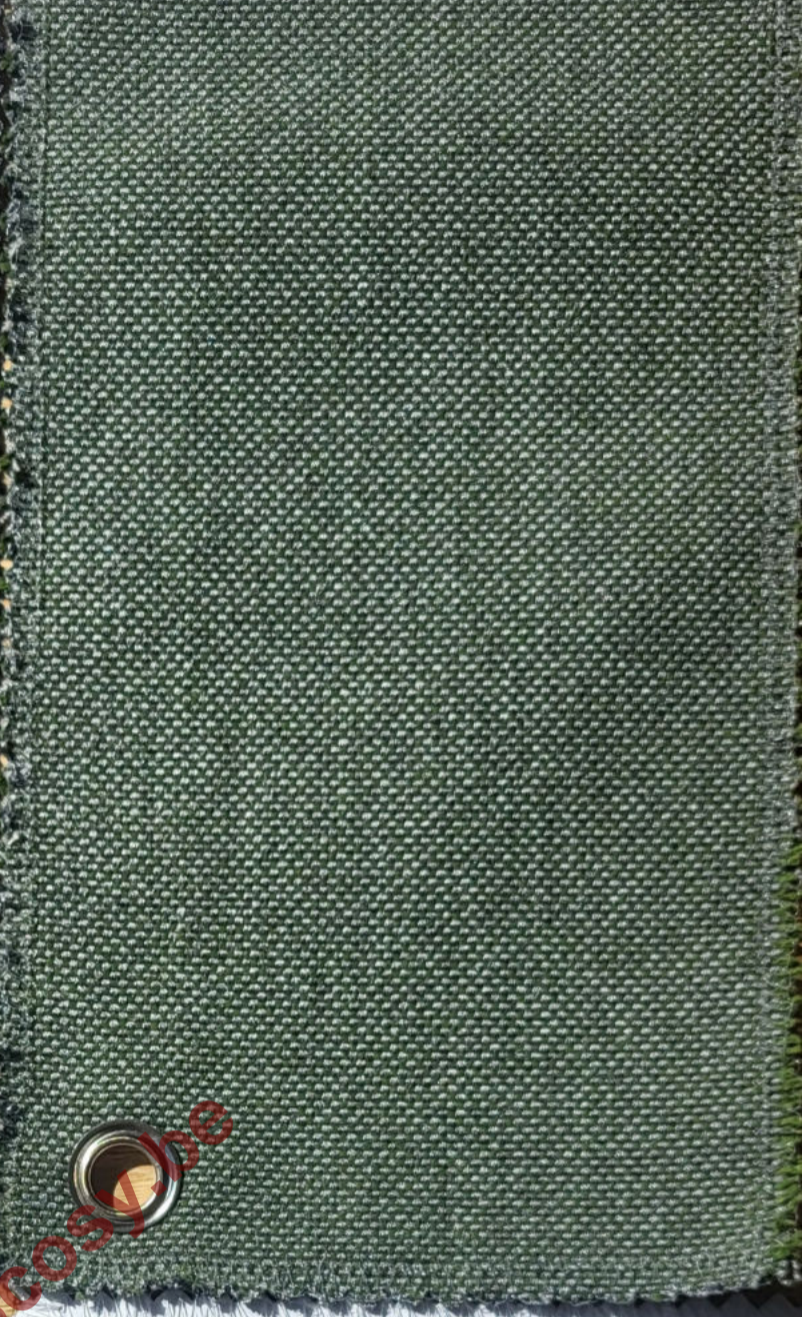
Composition : 100% Oerlin  
Weight/m<sup>2</sup> : 366 g/m<sup>2</sup>  
Colour Fastness UV : 7 to 8  
Rub Test : 16000 rubs  
NON PFAS

**JATI · KEBON**  
Sunbrella Natte Sooty

Composition: 100% Acrylic  
Weight/m<sup>2</sup>: 290g/m<sup>2</sup>  
Colour fastness UV: 8  
Pilling (Martindale) : 4  
NON PFAS

**JATI · KEBON**  
Sunbrella Natte Bamboo

Composition: 100% Acrylic  
Weight/m<sup>2</sup>: 290g/m<sup>2</sup>  
Colour fastness UV: 8  
Pilling (Martindale) : 4  
NON PFAS

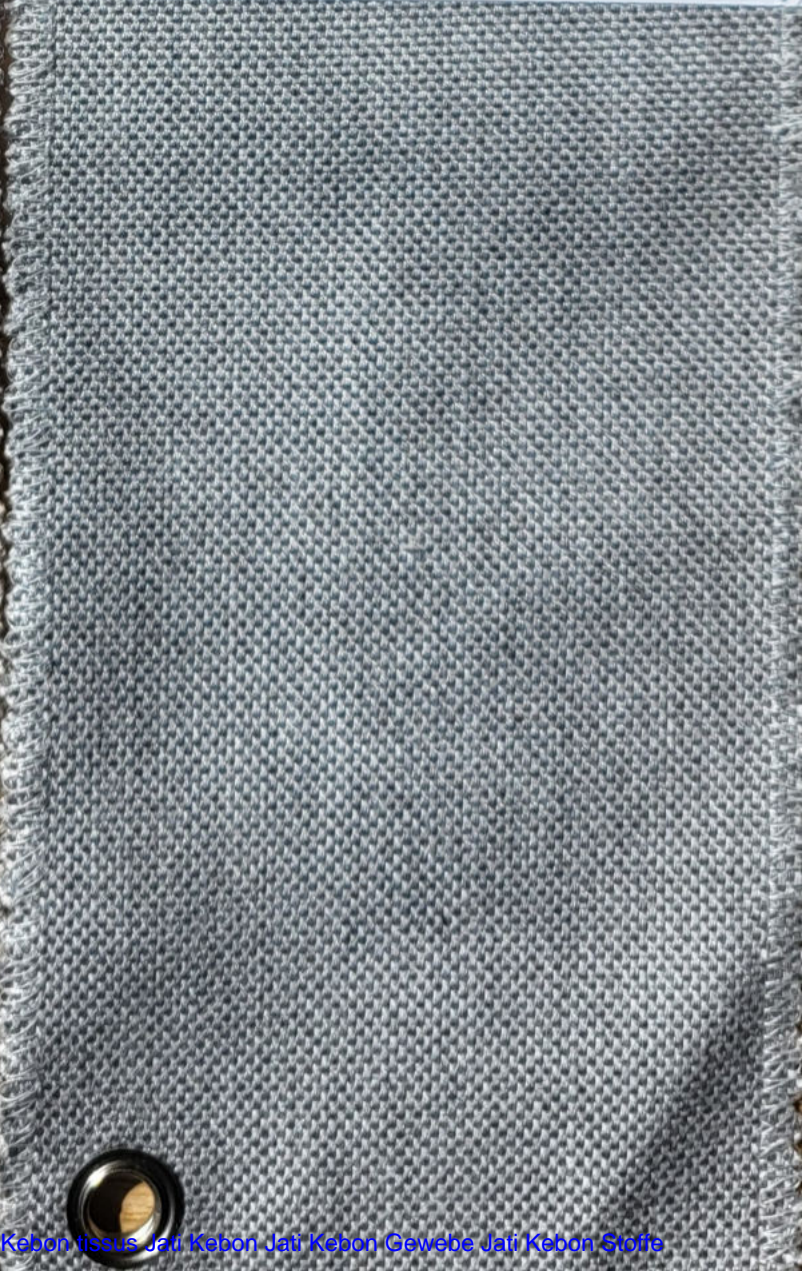


**JATI · KEBON**  
Sunbrella Natte Antique

Composition: 100% Acrylic  
Weight/m<sup>2</sup>: 290g/m<sup>2</sup>  
Colour fastness UV: 8  
Pilling (Martindale) : 4  
NON PFAS

**JATI · KEBON**  
Sunbrella Natte Grey Chine

Composition: 100% Acrylic  
Weight/m<sup>2</sup>: 290g/m<sup>2</sup>  
Colour fastness UV: 8  
Pilling (Martindale) : 4  
NON PFAS



www.bcosy.be

**JATI-KEBON**  
Sunbrella Source Oak

Composition: 50% recycled Acrylic,  
47% Acrylic, 3% Polyester  
Weight/m<sup>2</sup>: 365g/m<sup>2</sup>  
Colour fastness UV: 8  
Pilling (Martindale) : 5  
NON PFAS

**JATI-KEBON**  
Sunbrella Source Padouk

Composition: 50% recycled Acrylic,  
47% Acrylic, 3% Polyester  
Weight/m<sup>2</sup>: 365g/m<sup>2</sup>  
Colour fastness UV: 8  
Pilling (Martindale) : 5  
NON PFAS

[www.Bcosy-outdoor.be](http://www.Bcosy-outdoor.be)



**JATI · KEBON**  
Sunbrella Savane Swamp  
Composition: 100% Acrylic  
Weight/m<sup>2</sup>: 430g/m<sup>2</sup>  
Colour fastness UV: 8  
Pilling (Martindale): 5  
NON PFAS

**JATI · KEBON**  
Sunbrella Savane Coconut  
Composition: 100% Acrylic  
Weight/m<sup>2</sup>: 430g/m<sup>2</sup>  
Colour fastness UV: 8  
Pilling (Martindale): 5  
NON PFAS

**JATI · KEBON**  
Sunbrella Savane Chameleon  
Composition: 100% Acrylic  
Weight/m<sup>2</sup>: 430g/m<sup>2</sup>  
Colour fastness UV: 8  
Pilling (Martindale): 5  
NON PFAS



**JATI · KEBON**  
Sunbrella Savane Tornado  
Composition: 100% Acrylic  
Weight/m<sup>2</sup>: 430g/m<sup>2</sup>  
Colour fastness UV: 8  
Pilling (Martindale): 5  
NON PFAS

**JATI · KEBON**  
Sunbrella Savane Whisper  
Composition: 100% Acrylic  
Weight/m<sup>2</sup>: 430g/m<sup>2</sup>  
Colour fastness UV: 8  
Pilling (Martindale): 5  
NON PFAS



www.Bcosy.be

**JATI - KEBON**  
 Sunbrella Tundra Souk

Composition: 100% Acrylic  
 Weight/m<sup>2</sup>: 435g/m<sup>2</sup>  
 Colour fastness UV: 8  
 Pilling (Martindale) : 4/5  
 NON PFAS

**JATI - KEBON**  
 Sunbrella Tundra Rye

Composition: 100% Acrylic  
 Weight/m<sup>2</sup>: 435g/m<sup>2</sup>  
 Colour fastness UV: 8  
 Pilling (Martindale) : 4/5  
 NON PFAS



**JATI - KEBON**  
 Sunbrella Tundra Cement

Composition: 100% Acrylic  
 Weight/m<sup>2</sup>: 435g/m<sup>2</sup>  
 Colour fastness UV: 8  
 Pilling (Martindale) : 4/5  
 NON PFAS

**JATI - KEBON**  
 Sunbrella Tundra Bark

Composition: 100% Acrylic  
 Weight/m<sup>2</sup>: 435g/m<sup>2</sup>  
 Colour fastness UV: 8  
 Pilling (Martindale) : 4/5  
 NON PFAS



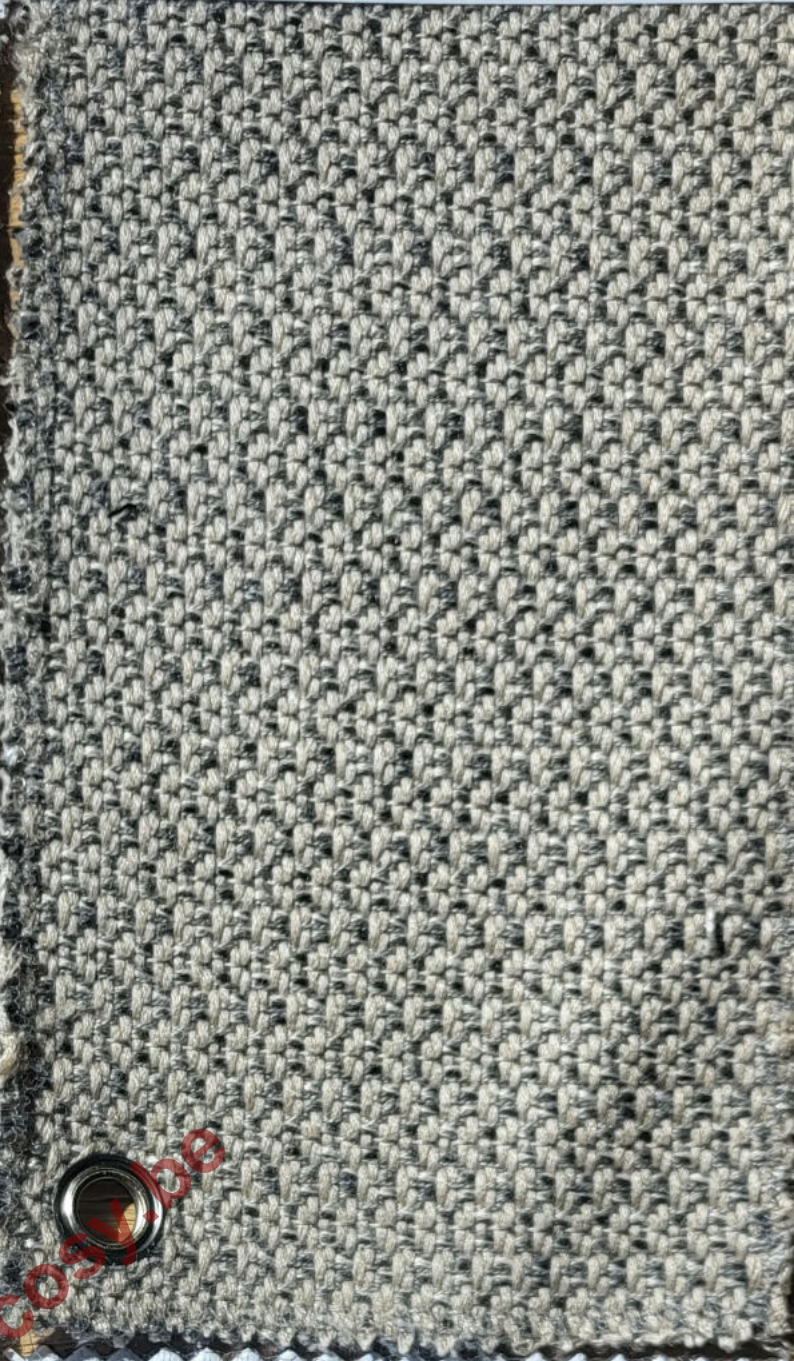
www.Bcosy.be

**JATI - KEBON**  
Sunbrella Lopi Marble

Composition: 100% Acrylic  
Weight/m<sup>2</sup>: 680g/m<sup>2</sup>  
Colour fastness UV: 8  
Pilling (Martindale) : 4/5  
NON PFAS

**JATI - KEBON**  
Sunbrella Lopi Sand

Composition: 100% Acrylic  
Weight/m<sup>2</sup>: 680g/m<sup>2</sup>  
Colour fastness UV: 8  
Pilling (Martindale) : 4/5  
NON PFAS

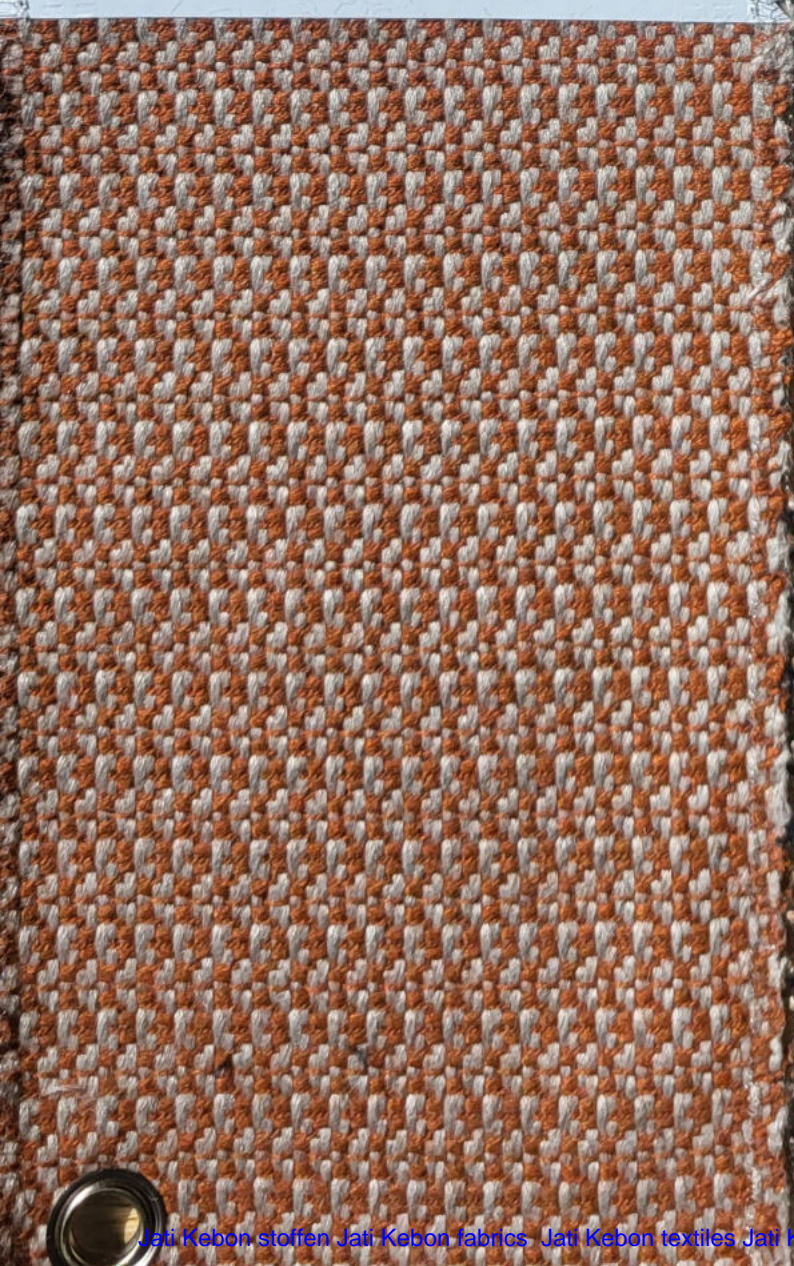


**JATI - KEBON**  
Sunbrella Lopi Fawn

Composition: 100% Acrylic  
Weight/m<sup>2</sup>: 680g/m<sup>2</sup>  
Colour fastness UV: 8  
Pilling (Martindale) : 4/5  
NON PFAS

**JATI - KEBON**  
Sunbrella Lopi Viper

Composition: 100% Acrylic  
Weight/m<sup>2</sup>: 680g/m<sup>2</sup>  
Colour fastness UV: 8  
Pilling (Martindale) : 4/5  
NON PFAS



www.Bcosy.be

## JATI-KEBON

Sunbrella Wander Manioc

Composition: 100% Acrylic

Weight/m<sup>2</sup>: 470g/m<sup>2</sup>

Colour fastness UV: 8

Pilling (Martindale) : 4

NON PFAS

## JATI-KEBON

Sunbrella Wander Gobi

Composition: 100% Acrylic

Weight/m<sup>2</sup>: 470g/m<sup>2</sup>

Colour fastness UV: 8

Pilling (Martindale) : 4

NON PFAS





**JATI-KEBON**  
Sunbrella Yama Fuji

Composition: 100% Acrylic  
Weight/m<sup>2</sup>: 545g/m<sup>2</sup>  
Colour fastness UV: 8  
Pilling (Martindale) : 4.5

NON PFAS

**JATI-KEBON**  
Sunbrella Yama Tomori

Composition: 100% Acrylic  
Weight/m<sup>2</sup>: 545g/m<sup>2</sup>  
Colour fastness UV: 8  
Pilling (Martindale) : 4.5

NON PFAS